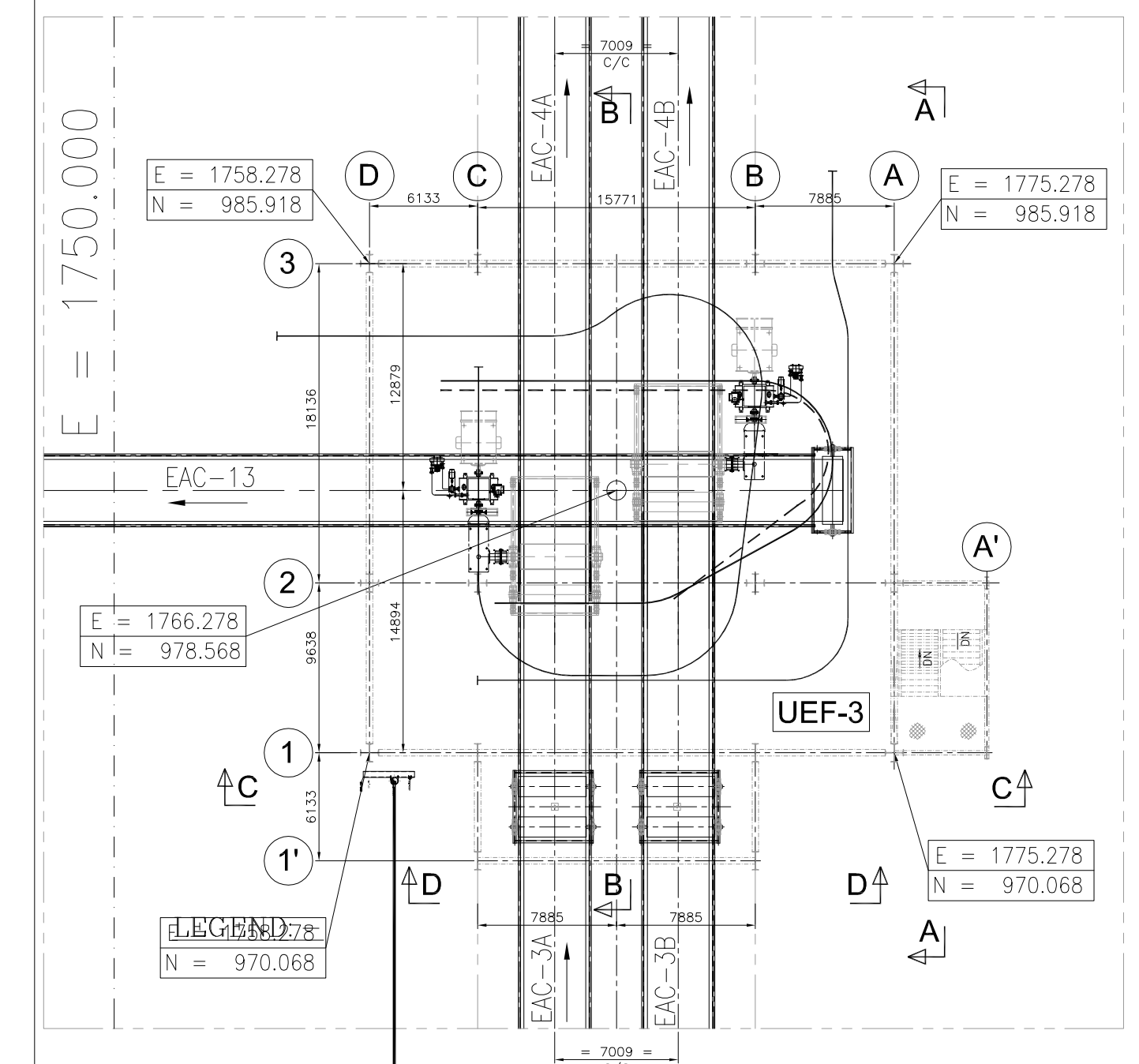
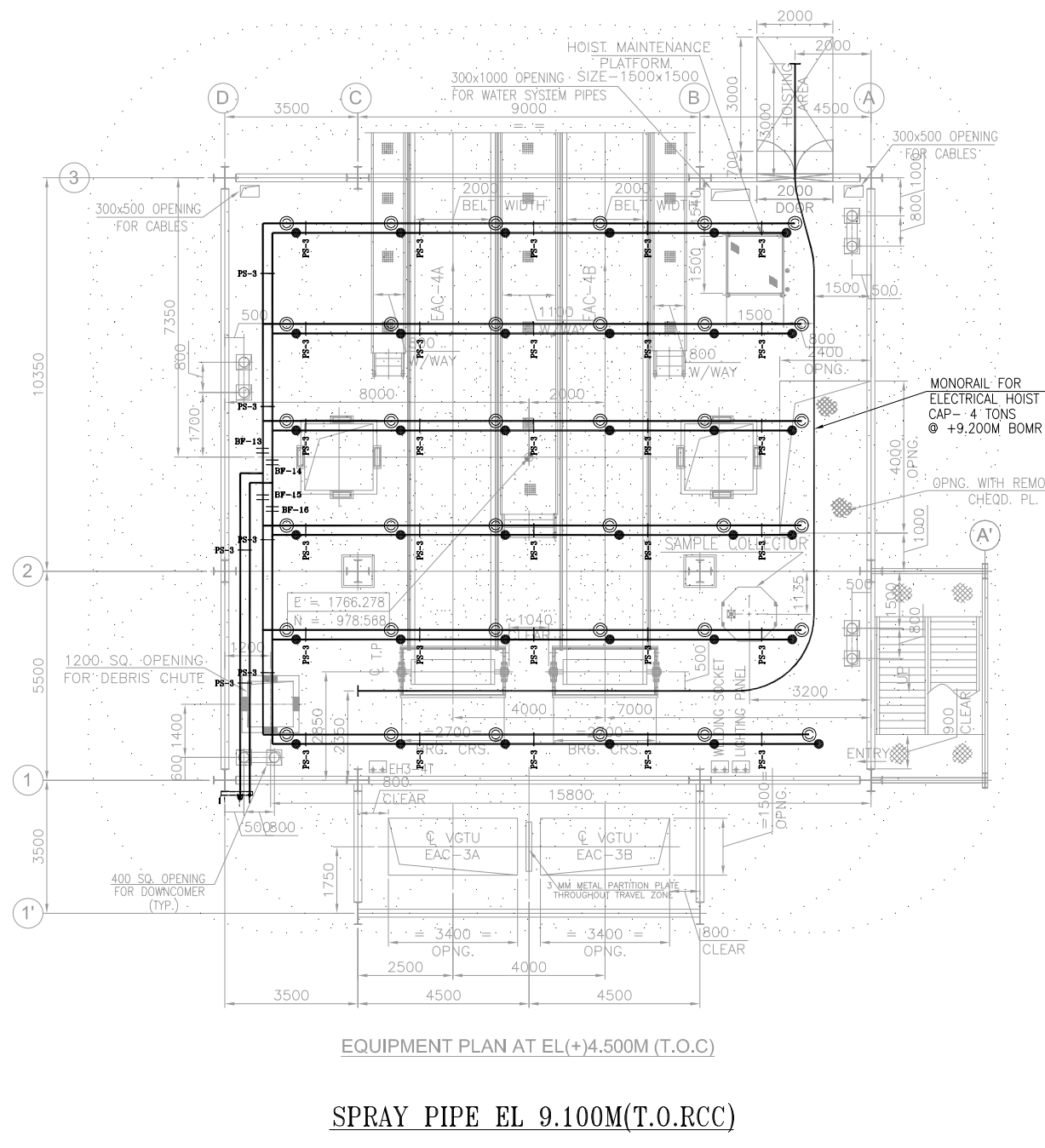
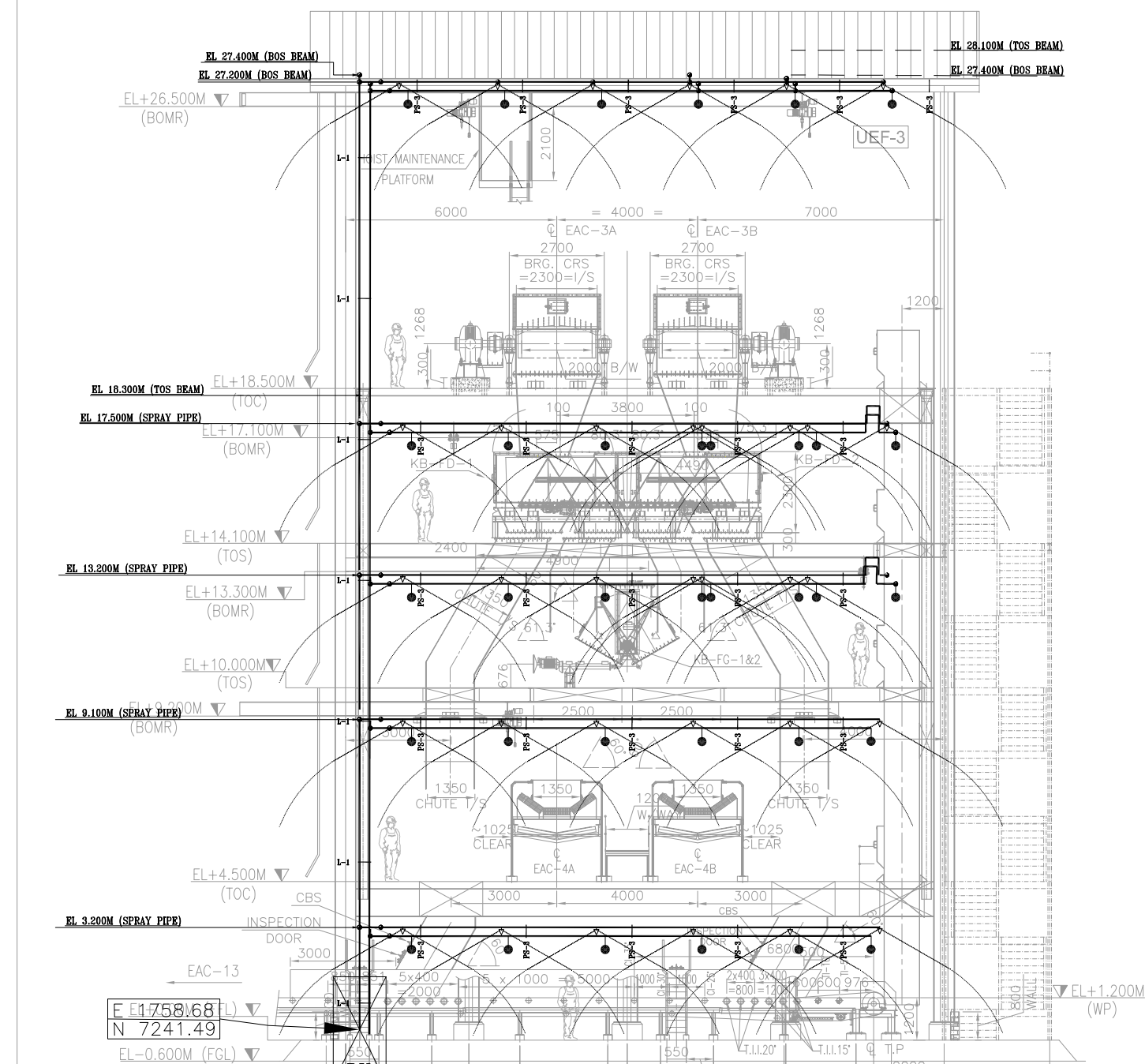
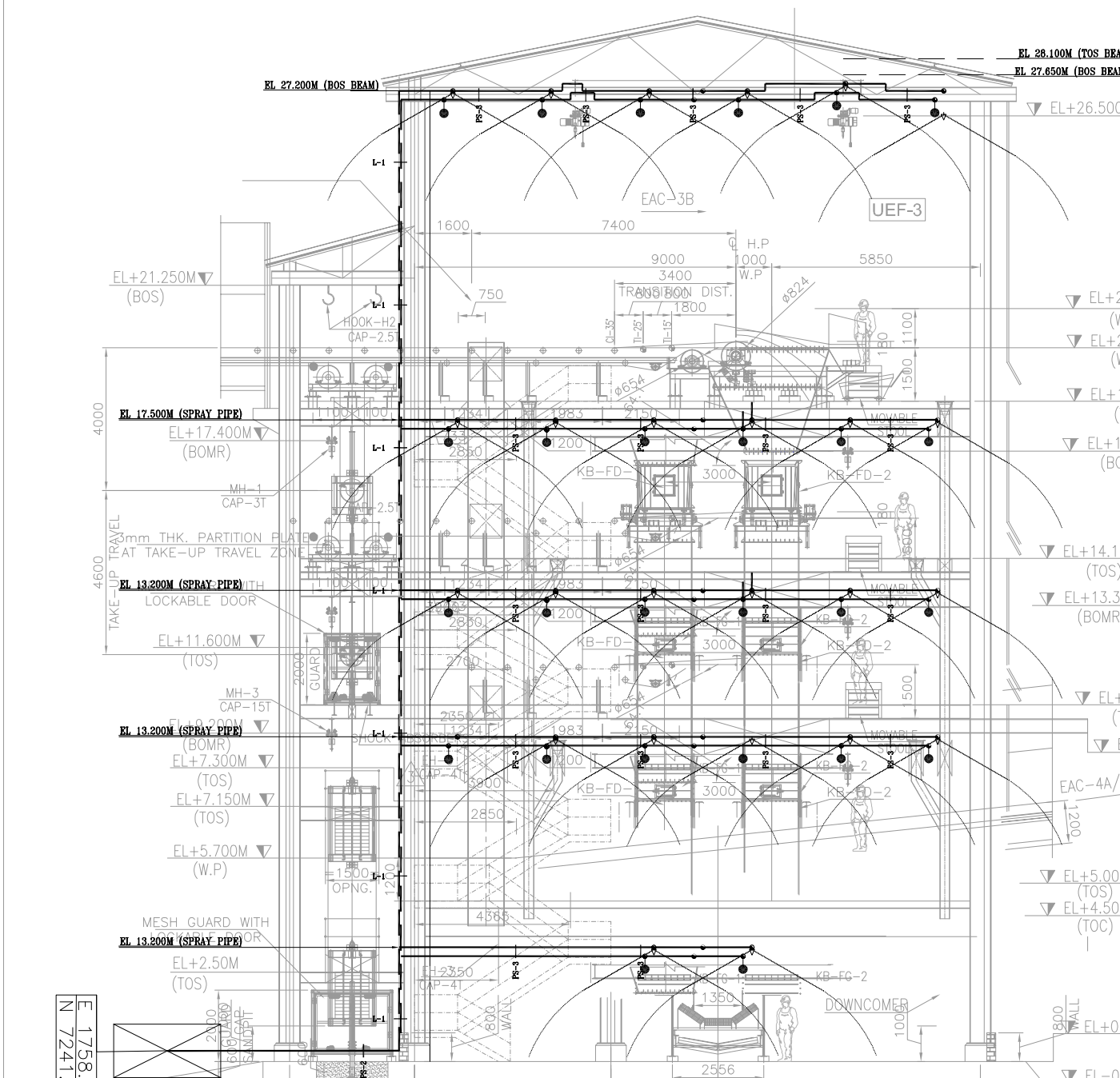
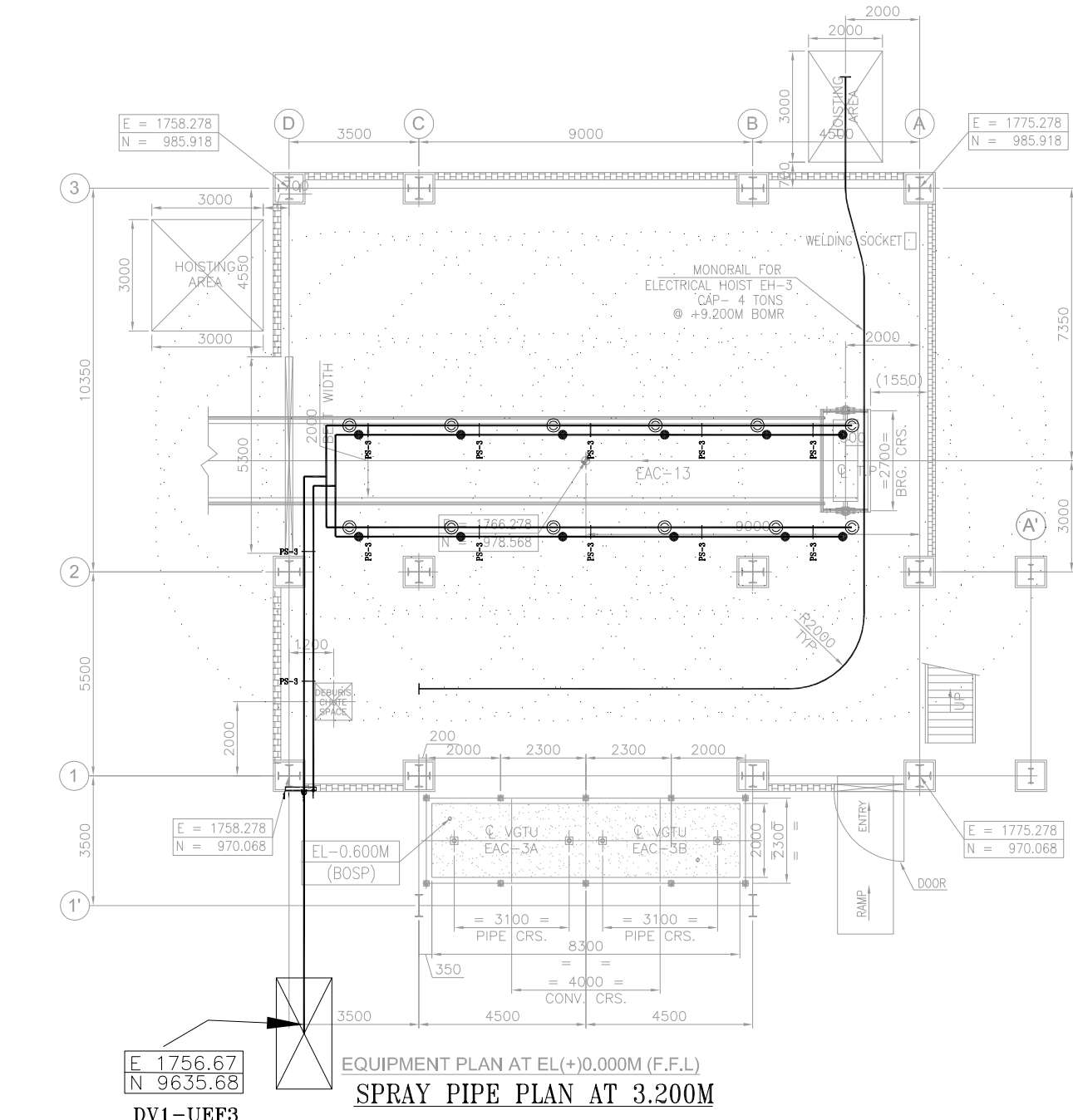






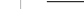



THE INFORMATION ON THIS DOCUMENT IS THE PROPERTY OF BHARAT HEAVY ELECTRICALS LIMITED. IT MUST NOT BE USED DIRECTLY OR INDIRECTLY IN ANY WAY DETRIMENTAL TO THE INTEREST OF THE COMPANY



Sr.No.	SYMBOL	DESCRIPTION
01.		FIRE WATER HEADER
02.		DETECTION LINE
03.		DELUGE VALVE (DV)
04.		GATE VALVE (GV)
05.		Y TYPE STRAINER
06.		QUARTZOID BULB DETECTOR RATING 79°C
07.		MW SPRAY NOZZLE
08.		FLANGE

[illegible]

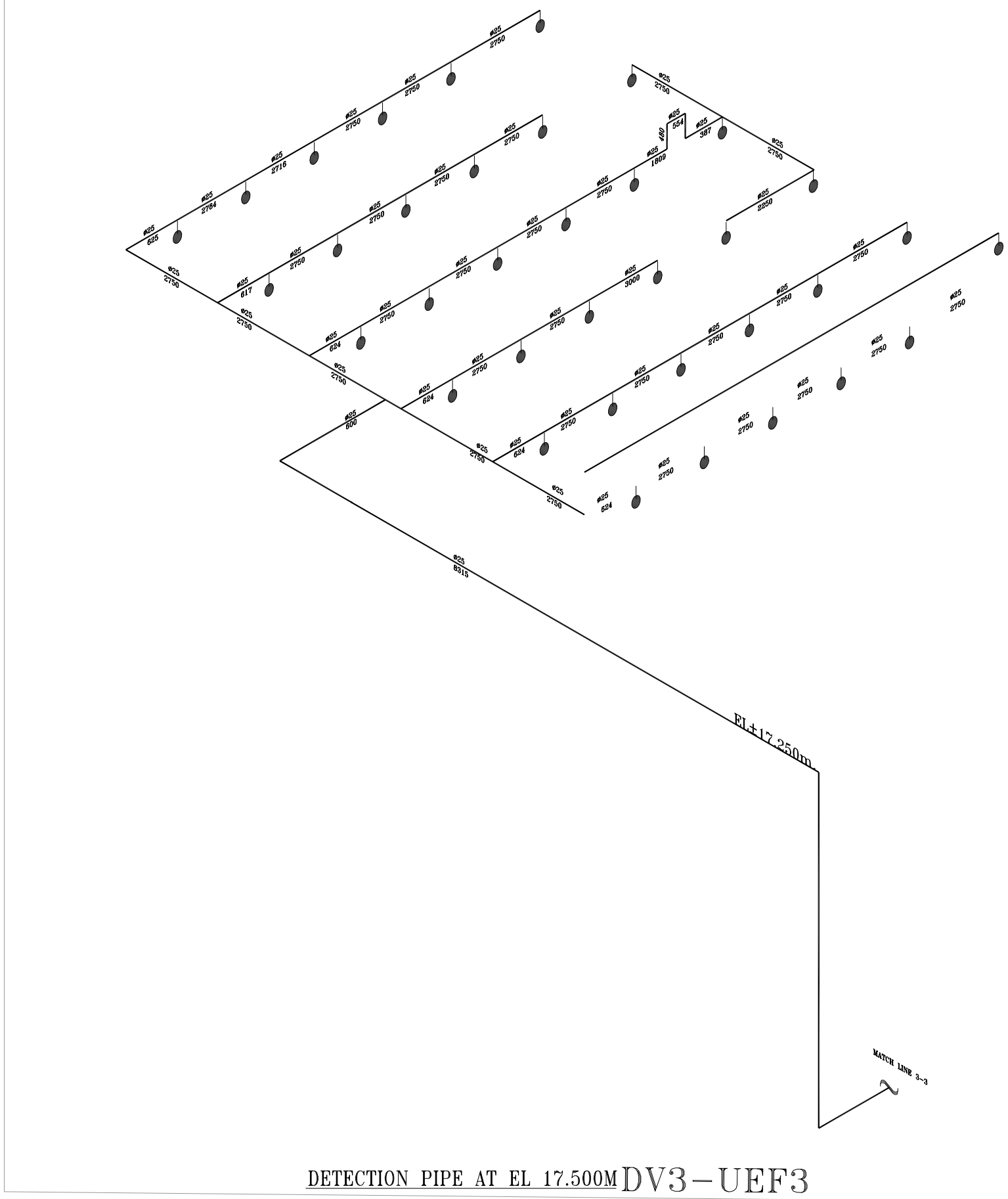
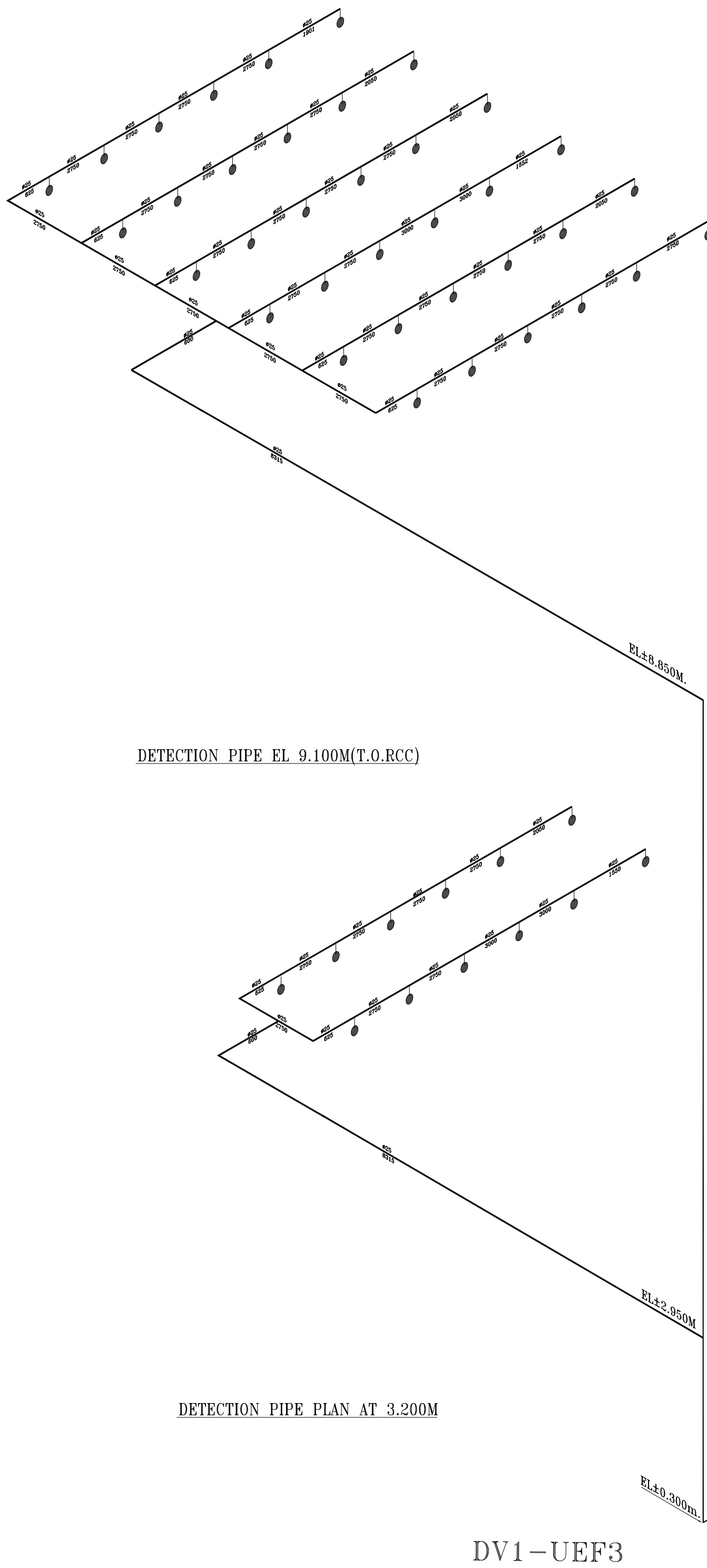
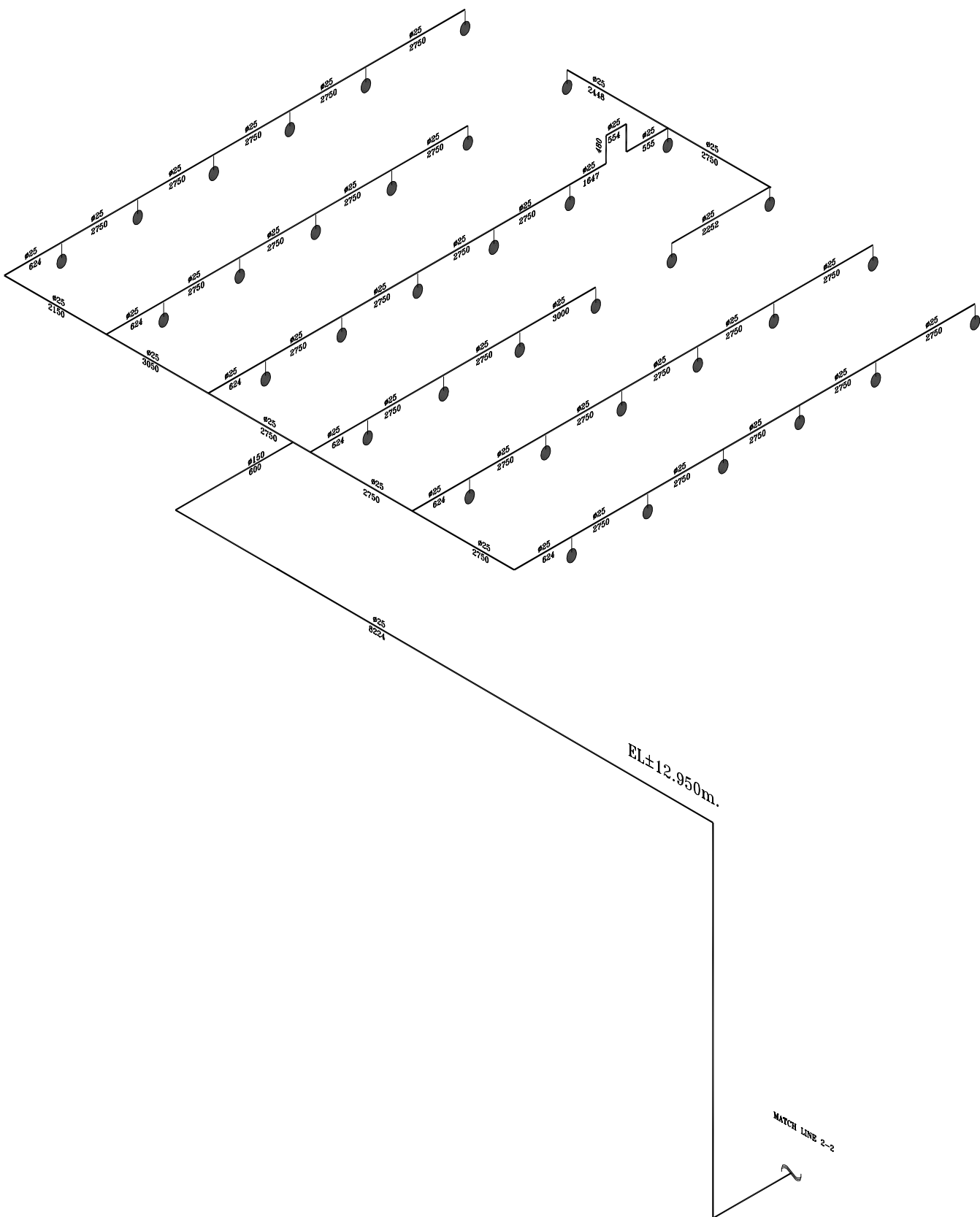
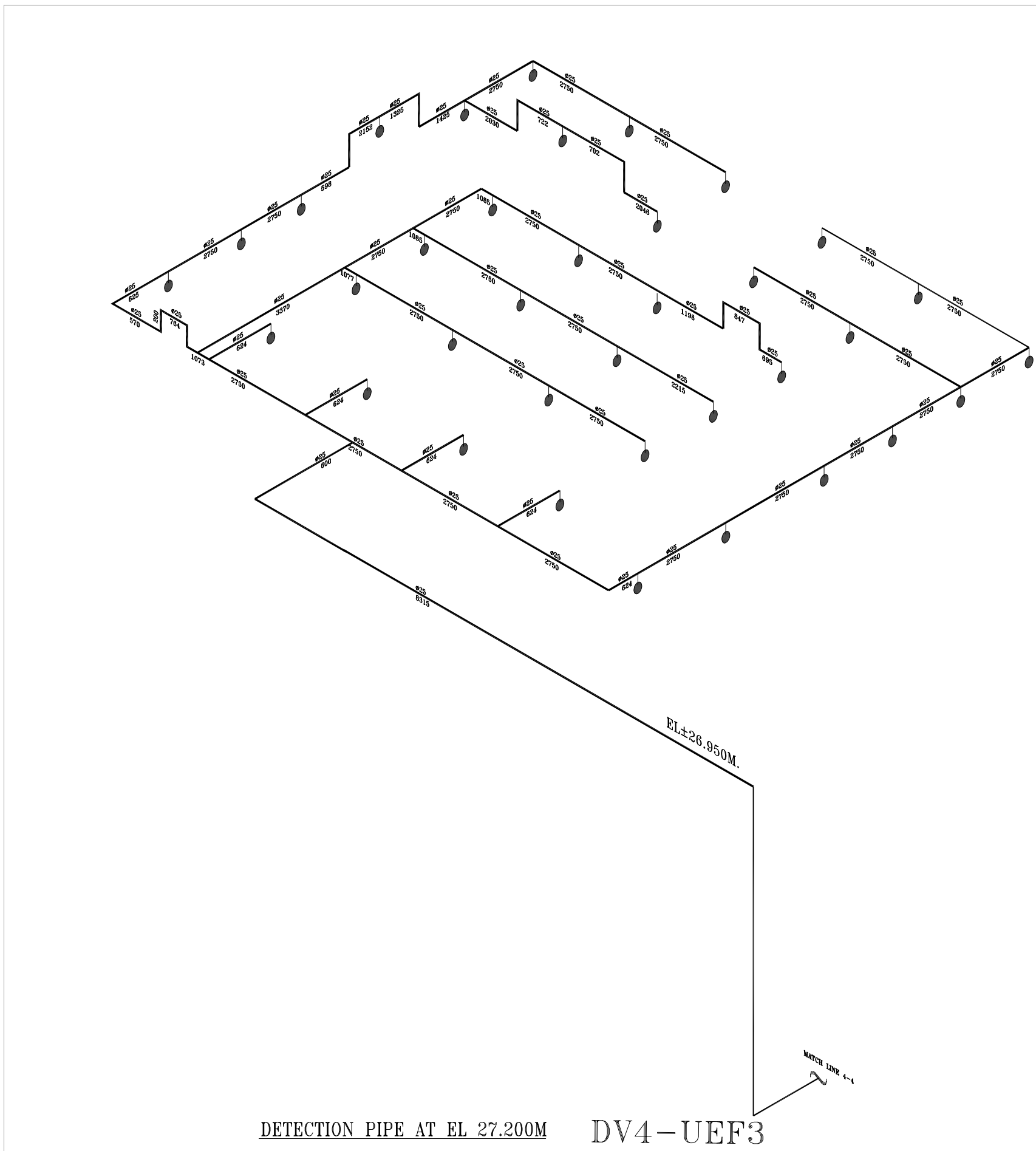
GENERAL DIMENSIONAL LIMITS, FITS & TOLERANCES AS PER HY0230261



	REV 01
--	--------

THE INFORMATION ON THIS DOCUMENT IS THE PROPERTY OF BHARAT HEAVY ELECTRICALS LIMITED. IT MUST NOT BE USED DIRECTLY OR INDIRECTLY IN ANY WAY DETRIMENTAL TO THE INTEREST OF THE COMPANY

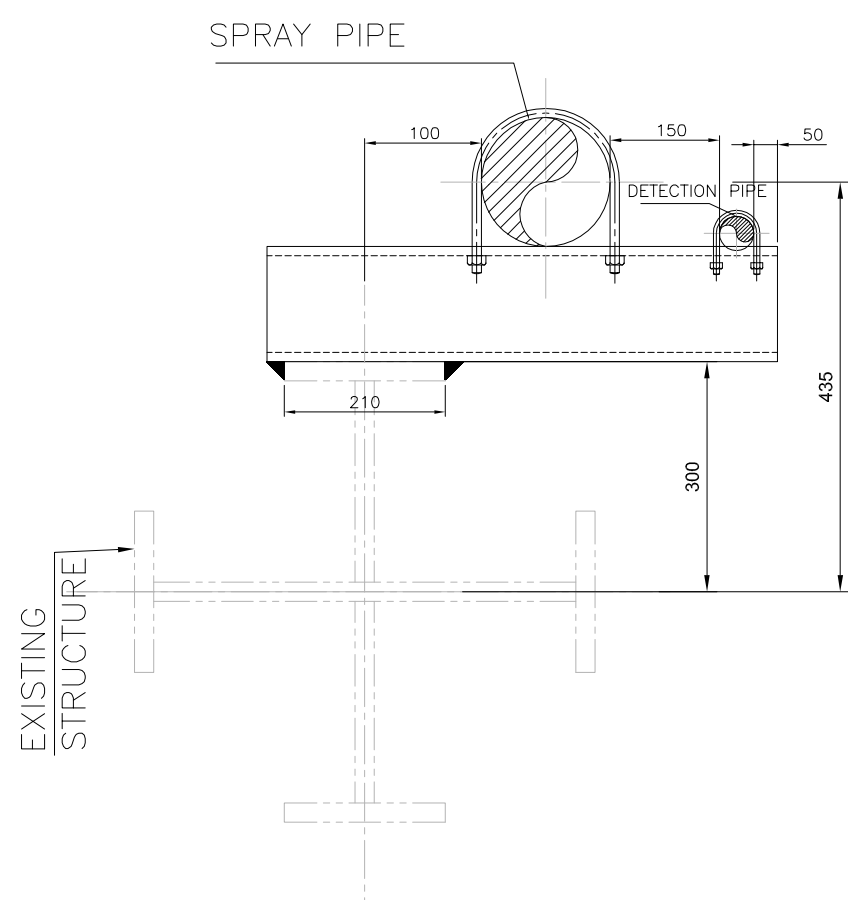
N. AND DATE	REF. DES. NO.	COMPUTER FILE NAME 03810101590.500.R01.DWG	F	X	C
-------------	---------------	---	---	---	---

GENERAL DIMENSIONAL LIMITS, FITS & TOLERANCES AS PER HY0230261



01	14.05.19	ANUPAM	AMIT KUMAR	LONGERASH	SEKHAR	REVISED AS PER CUSTOMER COMMENTS	
02	30.01.19	ANUPAM	AMIT KUMAR	LONGERASH	SEKHAR	INITIAL SUBMISSION	
	DATE	ALTERED BY	CHECKED BY	REVIEWED BY	APPROVED BY		NOTE
<p>PROJECT</p> <p>2x660MW MAITREE SUPER THERMAL POWER PROJECT, RAMPAL, BANGLADESH (EPC MAIN PLANT PACKAGE)</p> <p>OWNER</p> <p>BANGLADESH-INDIA FRIENDSHIP POWER COMPANY (PVT.) LIMITED, BANGLADESH</p> <p>OWNER CONSULTANT:</p> <p>FICHTNER M/s FICHTNER GmbH & Co KG, Stuttgart, GERMANY</p>  <p>EPC CONTRACTOR:</p> <p>BARHAT HEAVY ELECTRICALS LTD PROJECTS ENGINEERING & SYSTEMS DIVISION HYDRABAD</p> <p>SCAL SHEET NO.</p> <p>EPC CONTRACTOR'S ENGINEERING CONSULTANT (EC):</p>  <p>INTERNATIONAL FIRE ENGINEERING CONSULTANTS SERVING FOR THE SAFETY OF LIFE, PROPERTY, COMMODITY & ENVIRONMENT 1111, 40th Avenue, Suite 100, Fort Lauderdale, FL 33304, USA P.O. Box 140227, Fort Lauderdale, FL 33314, USA Tel: +1 954 584 2700 Fax: +1 954 481 6800 Email: info@ifec.com E-Mail: fire@ifecglobal.com / engineering@ifec.com, www.ifec.com</p> <p>IFEC</p> <p>TITLE PIRRO VALLEY A INDUSTRIAL VIEW OF NEW BARRI SYSTEM FOR TRANSFER PUMP STATION</p> <p>SIZE: A1 DRAWING NO.: FILE:</p> <p>AN: PROJECT NO.: MAITREE-00-30C-MB-376036-PES</p>							

SUPPORT SPAN DETAILS



TYP. DETAIL OF SUPPORT(L1)=18Nos.

LEGEND :

SR.NO.	DESCRIPTION	UNIT	UNIT QTY	TOTAL QTY
1	U Bolts-M10-100NB	NOS	01	04
2	C-CHANNEL-ISMIC 100	MTRS	0.5	2.0
3	C-CHANNEL-ISMIC 100	MTRS	0.6	2.4
4	Anchor fastners-M10X100mm lng	NOS	04	16
5	MS PLATES-150x150x8mm thk	NOS	01	04

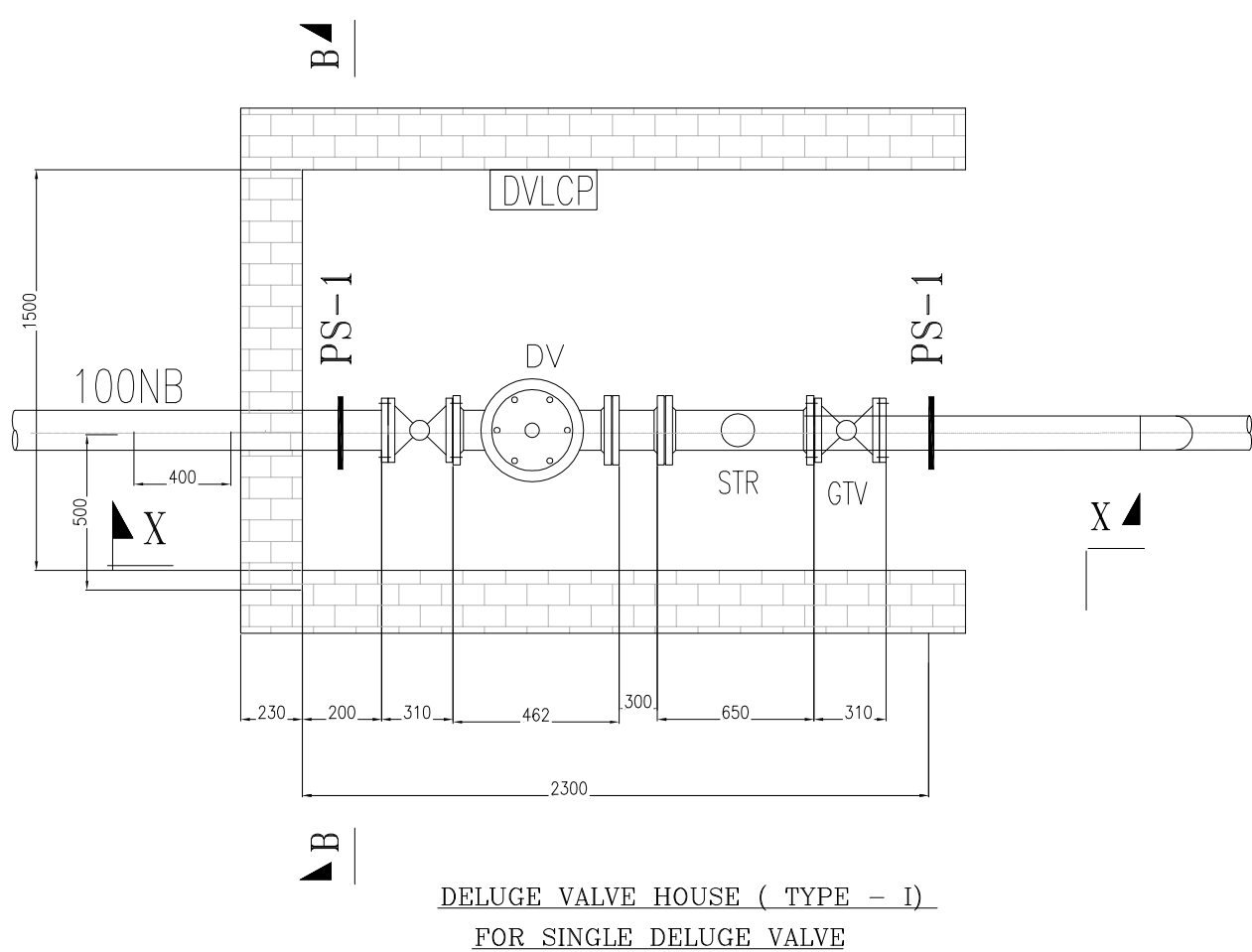
SCHEDULE OF
PIPE SUPPORTS & U BOLTS

SR.NO.	DESCRIPTION	UNIT	UNIT QTY	TOTAL QTY	SCHEDULE OF			
					PIPE SUPPORTS & U BOLTS			
1	U BOLTS				PIPE DIA	U Bolts for Spray Pipe	U Bolts for Det. Pipe	
1.1	U Bolts-M10-100NB	NOS	01	26				
1.2	U Bolts-M8-40NB	NOS	01	28				
1.3	U Bolts-M6-32NB	NOS	01	51	100NB	26 NOS	-	
1.4	U Bolts-M6-25NB (Spray Pipe)	NOS	01	49	40 NB	28 NOS	-	
1.5	U Bolts-M6-25NB (Detection Pipe)	NOS	01	154	32 NB	51 NOS	-	
2	L- ANGLE=50x50x6mm thick	MTRS	0.3	47	25NB	49 NOS	154 NOS	
3	L- ANGLE=50x50x6mm thick	MTRS	0.7	108				
4	MS PLATES=150x150x8mm thick	MTRS	01	154				
					TOTAL QTY OF PS-1 SUPPORTS	154 NOS		

LEGEND:

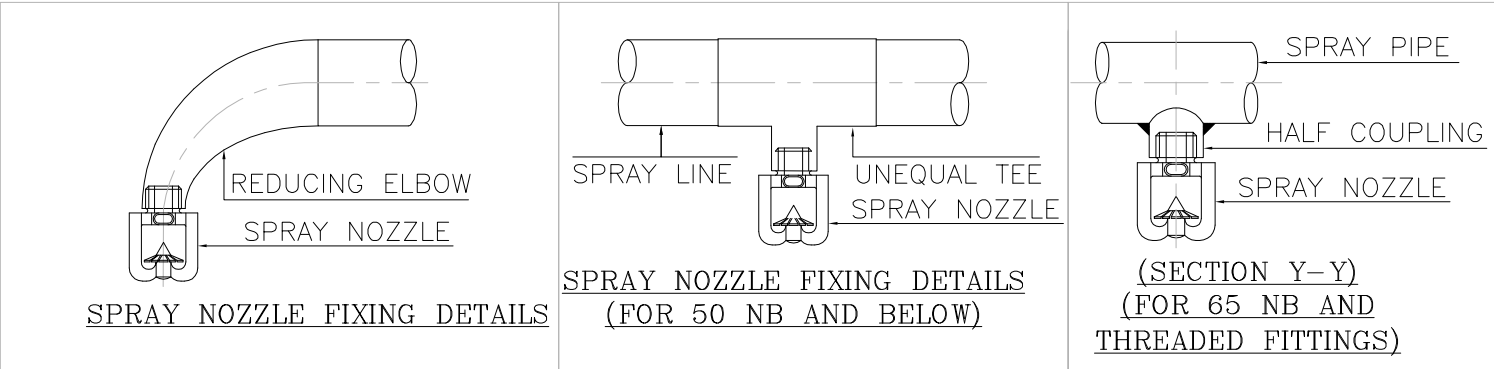
SR.NO.	DESCRIPTION	UNIT	UNIT QTY	TOTAL QTY
1	U Bolts			
1.1	U Bolts-M10-100NB	NOS	01	18
1.2	U Bolts-M6-25NB (DP)	NOS	01	18
2	C-CHANNEL-ISMIC 100	MTRS	0.8	15.0

TYPICAL DELUGE VALVE HOUSE ARRANGEMENT

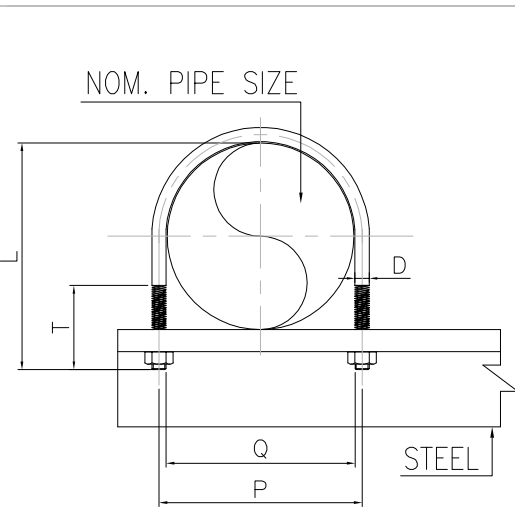


DELUGE VALVE HOUSE (TYPE - I)
FOR SINGLE DELUGE VALVE

ARRANGEMENT OF 'U' BOLT FOR BARE PIPE



U CLAMP DETAILS



SR. NO.	SIZE NB	PIPE OD	'U' CLAMPS				
			'L'	'P'	'T'	'D'	'Q'
1.	ø25	33	75	45	55	06	37
2.	ø40	48	90	60	65	06	57
3.	ø50	60	105	72	60	08	64
4.	ø65	73	120	82	70	08	70
5.	ø80	89	145	106	80	08	94
6.	ø100	114	170	130	80	08	119
7.	ø150	168	240	190	100	10	173

01	14.05.19	ANUPAM	AMIT KUMAR	LONGERASH	SEKHAR	REVISED AS PER CUSTOMER COMMENTS	
02	30.01.19	ANUPAM	AMIT KUMAR	LONGERASH	SEKHAR	INITIAL SUBMISSION	
	DATE	ALTERED BY	CHECKED BY	REVIEWED BY	APPROVED BY		NOTE
<p>PROJECT</p> <p>2x660MW MAITREE SUPER THERMAL POWER PROJECT, RAMPAL, BANGLADESH (EPC MAIN PLANT PACKAGE)</p> <p>OWNER</p> <p>BANGLADESH-INDIA FRIENDSHIP POWER COMPANY (PVT.) LIMITED, BANGLADESH</p> <p>EPC CONTRACTOR</p> <p>BIHAR HEAVY ELECTRICALS LTD PROJECTS ENGINEERING & SYSTEMS DIVISION HYDERABAD</p> <p>SCAL</p> <p>SHEET NO.</p> <p>EPC CONTRACTOR'S ENGINEERING CONSULTANT (EC)</p> <p>INTERNATIONAL FIRE ENGINEERING CONSULTANTS SERVING FOR THE SAFETY OF LIFE, PROPERTY, COMMODITY & ENVIRONMENT 11114, ALEXANDRIA STREET, NEW DELHI-110028, INDIA TEL: +91 11 4242 2700 FAX: +91 11 4242 6801 MOB: +91 9755 504064 E-MAIL: fire@infec.org.in / info@infec.org.in, WWW: www.infec.in</p> <p>IFEC</p> <p>ITILE PIPRO VALVE & ISOLATING-VIEW OF NEW BARRI SYSTEM FOR TRANSFER PUMP (P)</p> <p>SIZE: A1</p> <p>DRAWING NO.:</p> <p>FILE:</p> <p>AN:</p> <p>PROJECT NO. MAITREE-00-30C-MB-376036-PES</p> <p>AP</p>							